

# SENSORS and ACTUATORS




for CS121,  
SENSORMANAGER II,  
SITEMANAGER II  
and SITEMONITOR II

All of the **sensors** provided by Generex have been specially adapted for use with either the CS121, SENSORMANAGER II, SITEMANAGER II or SITEMONITOR II. A pre-converted cable is included with each sensor so that they can easily be installed. Except for the SM\_T\_COM and the SM\_T\_H\_COM sensor, all sensors have an RJ12 plug. Thereby, connections can be made to the processor unit using already available RJ45 sockets and patch fields.



Each casing can be attached to a fixture like a wall through two holes that are at the base of the housing.

The **sensors** can be directly connected to the in-/outputs of the SENSORMANAGER II, the SITEMANAGER II, the SITEMONITOR II or the interface of the CS121 or BACS WEBMANAGER series. The **actuators** can be directly connected to the outputs of the products mentioned above. The acoustic alarm actuators have an LED and a button for temporarily deactivating the sounding alarm.











## Sensors for CS121 – Technical Data

<b>Temperature Sensor</b> SM_T_COM	Measurement Range: Output Signal: Power Supply Voltage: Special Features: Connection Cable: Dimensions:	-25°C - +100°C, +/- 0,5% Serial Protocol (2400 Baud) 8 - 15V DC Supply via CS121 COM2 port DB9 - Mini-DIN, 1.8m, (Included) max. 30m 70 x 70 x 27 mm (W x L x H)	
<b>Combisensor for Temperature and Humidity</b> SM_T_H_COM	Measurement Range / Temperature: Measurement Range / Humidity: Output Signal: Power Supply Voltage: Special Features: Connection Cable: Dimensions:	-25°C - +100°C, +/- 0,5% 0 - 100% rel. H, +/- 2% Serial Protocol (2400 Baud) 8 - 15V DC Supply via CS121 COM2 port DB9 - Mini-DIN, 1.8m, (Included) max. 30m 70 x 70 x 27 mm (W x L x H)	
<b>Alarm Buzzer Actuator</b> CS121_BUZ	Power Supply Voltage: Current Consumption: Sound Level: Connection Cable: Dimensions:	3 - 4V DC ca. 15mA ca. 70 dB RJ12/6_5, 5m, (Included in delivery) max. 5m 70 x 70 x 27 mm (W x L x H)	

## Sensors for SENSORMANAGER II – Technical Data

<b>Temperature Sensor</b> Analog SM_T	Measurement Range: Power Supply Voltage: Output Signal: Additional Inputs: Special Features: Connection Cable: Dimensions:	0°C - +100°C, +/- 1% 15 - 24V DC 0 - 10V DC 1x Digital Connection for other sensors RJ12/6_5, 5m, (Included) max. 50m 70 x 70 x 27 mm (W x L x H)	
<b>Combisensor for Temperature and Humidity</b> Analog SM_T_H	Measurement Range / Temperature: Measurement Range / Humidity: Power Supply Voltage: Output Signal: Additional Inputs: Connection Cable: Dimensions:	0°C - +100°C, +/- 1% 0 - 100% rel. H, +/- 5% 15 - 24V DC 2x 0 - 10V DC 1x Digital RJ12/6_5, 5m, (Included) max. 50m 70 x 70 x 27 mm (W x L x H)	

# Sensors for SENSORMANAGER II – Technical Data

<b>True RMS Converter AC Voltage</b> SM_VMC	Measurement Range: Power Supply Voltage: Output Signal: Special Features: Connection Cable: Dimensions:	160 - 250V (AC, True RMS) 12 - 24V DC 0 - 10V DC Measurement via accompanying power supply RJ12/6_5, 5m, (Included) max. 50m 70 x 70 x 27 mm (W x L x H)	
<b>Water and High Humidity Indicator</b> SM_HYGRO	Measurement Range: Power Supply: Current Consumption: Contact Load: Type of Contact: Special Features:	94% rel. Humidity 230V / AC +/- 10% / 3VA ca. 15 mA 250 V/AC/6A NC 1 Sensor (Included in delivery) included Alarmbuzzer Up to 3 sensors may be connected	
<b>Sensor for SM_Hygro</b> SM_HYG_S	Connection Cable: Dimensions:	RJ12/6_5, 5m, (Included) max. 50m 112 x 94 x 52 mm (W x L x H)	
<b>Glas Break Sensor</b> Digital SM_GLAS	Dimension:	Sensor with 2m cable	
<b>Motion Detector</b> SM_MD	Measurement Range: Type of Contact: Frequency Domain: Connection Cable: Dimensions:	Radius ca. 2m NC 120 kHz RJ12/6_5, 5m, (Included) max. 50m 27 x 27 x 14 mm (W x L x H)	
<b>Smoke Detector</b> SM_SD	Measurement Range: Power Supply Voltage: Output Signal: Current Consumption: Connection Cable: Dimensions:	14m x 14m, 90° 9 – 16 V DC Same as power supply ca. 17 mA RJ12/6_5, 5m, (Included) max. 50m 115 x 60 x 45 mm (W x L x H)	
<b>Relay Box</b> <b>Digital Actuator</b> SM_IO	Power Supply Voltage: Output Signal: Current Consumption: Detection: Connection Cable: Dimensions:	10 – 15V DC Same as power supply ca. 50mA Photoelectric chamber RJ12/6_5, 5m, (Included) max. 50m 84 x 77 mm (D x H)	
<b>Alarm Buzzer Actuator</b> SM_BUZ	Power Supply Voltage: Current Consumption: Switch contact: Cables : Dimensions:	12-15V DC ca. 20mA 125V AC, 1A (NO, NC contact) RJ12/6_5, 5m, (Included) max. 50m 70 x 70 x 27 mm (W x L x H)	
<b>Flash Light Actuator</b> SM_FLASH	Power Supply Voltage: Current Consumption: Sound Level: Connection Cable: Dimensions:	12 - 15V DC ca. 30mA ca. 85 dB RJ12/6_5, 5m, (Included) max. 50m 70 x 70 x 27 mm (W x L x H)	
<b>Door Contact</b> SM_DC	Power Supply Voltage: Current Consumption: Connection Cable: Dimensions:	12-15V DC ca. 170mA RJ12/6_5, 5m, (Included) max. 50m 70 x 40 mm (L x H)	
	Type of Contact: Connection Cable:	Magnetic Alarm Contact RJ12/6_5, 5m, (Included) max. 50m	

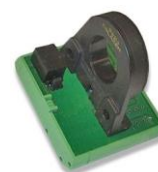
# Sensors for SENSORMANAGER II–Technical Data

## AC Current Sensor

SM\_CS25A

Measurement Range:  
Power Supply Voltage:  
Output Signal:  
Special Features:  
Connection Cable:  
Mounting:  
Dimensions:

0 – 25A (AC, True RMS)  
12 - 15V DC  
0 - 10V DC  
connection for other sensors  
RJ12/6\_5, 5m (Included) max. 50m  
DinRail or lateral mounting clips  
70 x 80 x 80 mm (W x L x H),  
Hall sensor diameter hole : 9,25mm

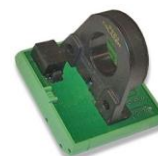


## AC Current Sensor

SM\_CS50A

Measurement Range:  
Power Supply Voltage:  
Output Signal:  
Special Features:  
Connection Cable:  
Mounting:  
Dimensions:

0 – 50A (AC, True RMS)  
12 - 15V DC  
0 - 10V DC  
connection for other sensors  
RJ12/6\_5, 5m (Included) max. 50m  
DinRail or lateral mounting clips  
70 x 80 x 80 mm (W x L x H),  
Hall sensor diameter hole : 9,25mm

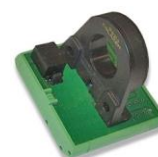


## AC Current Sensor

SM\_CS75A

Measurement Range:  
Power Supply Voltage:  
Output Signal:  
Special Features:  
Connection Cable:  
Mounting:  
Dimensions:

0 – 75A (AC, True RMS)  
12 - 15V DC  
0 - 10V DC  
connection for other sensors  
RJ12/6\_5, 5m (Included) max. 50m  
DinRail or lateral mounting clips  
70 x 80 x 80 mm (W x L x H),  
Hall sensor diameter hole : 9,25mm

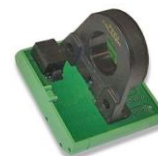


## AC Current Sensor

SM\_CS100A

Measurement Range:  
Power Supply Voltage:  
Output Signal:  
Special Features:  
Connection Cable:  
Mounting:  
Dimensions:

0 – 100A (AC, True RMS)  
12 - 15V DC  
0 - 10V DC  
connection for other sensors  
RJ12/6\_5, 5m (Included) max. 50m  
DinRail or lateral mounting clips  
70 x 80 x 80 mm (W x L x H),  
Hall sensor diameter hole : 9,25mm

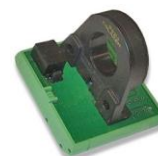


## AC Current Sensor

SM\_CS130A

Measurement Range:  
Power Supply Voltage:  
Output Signal:  
Special Features:  
Connection Cable:  
Mounting:  
Dimensions:

0 – 130A (AC, True RMS)  
12 - 15V DC  
0 - 10V DC  
connection for other sensors  
RJ12/6\_5, 5m (Included) max. 50m  
DinRail or lateral mounting clips  
70 x 80 x 80 mm (W x L x H),  
Hall sensor diameter hole : 9,25mm



# Sensors for SITEMANAGER II – Technical Data

**Temperature Sensor**  
 Analog  
 SM\_II\_T

Measurement Range: 0°C - +100°C, +/- 1%  
 Power Supply Voltage: 15 - 24V DC  
 Output Signal: 0 - 10V DC  
 Special Features: Connection for other sensors  
 Connection Cable: RJ12/6\_5, 5m, (Included) max. 50m  
 Dimensions: 70 x 70 x 27 mm (W x L x H)



**Combisensor for Temperature and Humidity**  
 Analog  
 SM\_II\_T\_H

Measurement Range / Temperature: 0°C - +100°C, +/- 1%  
 Measurement Range / Humidity: 0 - 100% rel. H, +/- 5%  
 Power Supply Voltage: 15 - 24V DC  
 Output Signal: 2x 0 - 10V DC  
 Connection Cable: RJ12/6\_5, 5m, (Included) max. 50m  
 Dimensions: 70 x 70 x 27 mm (W x L x H)



**Temperature Sensor**  
 Digital  
 SM\_II\_T\_DIG

Measurement Range: -25°C - +125°C  
 Power Supply Voltage: 15 - 24V DC  
 Output Signal: One wire  
 Special Features: Connection for other sensors  
 Connection Cable: RJ12/6\_5, 5m, (Included) max. 50m  
 Dimensions: 70 x 70 x 27 mm (W x L x H)



**True RMS Converter AC Voltage Sensor**  
 SM\_II\_VMC

Measurement Range: 160 - 260V (AC, True RMS)  
 Power Supply Voltage: 15 - 24V DC  
 Output Signal: 0 - 10V DC  
 Special Features: Measurement via accompanying power supply  
 Connection Cable: RJ12/6\_5, 5m, (Included) max. 50m  
 Dimensions: 70 x 70 x 27 mm (W x L x H)



**True RMS Converter AC Current Sensor**  
 SM\_II\_CMC

Measurement Range: Depends on which current sensor is in use (True RMS)  
 Power Supply Voltage: 15 - 24V DC  
 Output Signal: 0 - 10V DC  
 Special Features: Customer specific changes possible  
 Connection Cable: RJ12/6\_5, 5m, (Included) max. 50m  
 Dimensions: 70 x 70 x 27 mm (W x L x H)



**Water and High Humidity Sensor**  
 SM\_II\_HYGRO

Measurement Range: 94% rel. Humidity  
 Power Supply: 230V / AC +/- 10% / 3VA  
 Current Consumption: ca. 15 mA  
 Contact Load: 250 V/AC/6A  
 Type of Contact: NC  
 Special Features: 1 Sensor (Included in delivery) included Alarm buzzer  
 Up to 3 sensors may be connected  
 Connection Cable: RJ12/6\_5, 5m, (Included) max. 50m  
 Dimensions: 112 x 94 x 52 mm (W x L x H)



**Sensor for SM\_II\_Hygro**  
 SM\_II\_HYG\_S

Dimension: Sensor with 2m cable



**Glas Break Sensor**  
 Digital  
 SM\_II\_GLAS

Measurement Range: Radius ca. 2m  
 Type of Contact: NC  
 Frequency Domain: 120 kHz  
 Connection Cable: RJ12/6\_5, 5m, (Included) max. 50m  
 Dimensions: 27 x 27 x 14 mm (W x L x H)



**Motion Detector**  
 SM\_II\_MD

Measurement Range: 14m x 14m, 90°  
 Power Supply Voltage: 9 - 16 V DC  
 Output Signal: Same as power supply  
 Current Consumption: ca. 17 mA  
 Connection Cable: RJ12/6\_5, 5m, (Included) max. 50m  
 Dimensions: 115 x 60 x 45 mm (W x L x H)



**Door Contact**  
 SM\_II\_DC

Type of Contact: Magnetic Alarm Contact  
 Connection Cable: RJ12/6\_5, 5m, (Included) max. 50m



## Sensors for SITEMANAGER II – Technical Data

### Smoke Detector

SM\_II\_SD

Power Supply Voltage: 10 – 15V DC  
 Output Signal: Same as power supply  
 Current Consumption: ca. 50mA  
 Detection: Photoelectric chamber  
 Connection Cable: RJ12/6\_5, 5m, (Included) max. 50m  
 Dimensions: 84 x 77 mm (D x H)



### Alarm Buzzer Actuator

SM\_II\_BUZ

Power Supply Voltage: 12 - 15V DC  
 Current Consumption: ca. 30mA  
 Sound Level: ca. 85 dB  
 Connection Cable: RJ12/6\_5, 5m, (Included) max. 50m  
 Dimensions: 70 x 70 x 27 mm (W x L x H)



### Flash Light Actuator

SM\_II\_FLASH

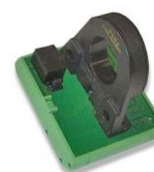
Power Supply Voltage: 12-15V DC  
 Current Consumption: ca. 170mA  
 Connection Cable: RJ12/6\_5, 5m, (Included) max. 50m  
 Dimensions: 70 x 40 mm (L x H)



### AC Current Sensor

SM\_II\_CS25A

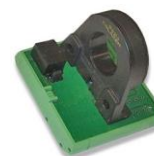
Measurement Range: 0 – 25A (AC, True RMS)  
 Power Supply Voltage: 12 - 15V DC  
 Output Signal: 0 - 10V DC  
 Special Features: connection for other sensors  
 Connection Cable: RJ12/6\_5, 5m (Included) max. 50m  
 Mounting: DinRail or lateral mounting clips  
 Dimensions: 70 x 80 x 80 mm (W x L x H),  
 Hall sensor diameter hole : 9,25mm



### AC Current Sensor

SM\_II\_CS50A

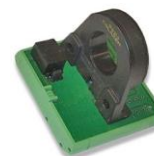
Measurement Range: 0 – 50A (AC, True RMS)  
 Power Supply Voltage: 12 - 15V DC  
 Output Signal: 0 - 10V DC  
 Special Features: connection for other sensors  
 Connection Cable: RJ12/6\_5, 5m (Included) max. 50m  
 Mounting: DinRail or lateral mounting clips  
 Dimensions: 70 x 80 x 80 mm (W x L x H),  
 Hall sensor diameter hole : 9,25mm



### AC Current Sensor

SM\_II\_CS75A

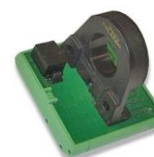
Measurement Range: 0 – 75A (AC, True RMS)  
 Power Supply Voltage: 12 - 15V DC  
 Output Signal: 0 - 10V DC  
 Special Features: connection for other sensors  
 Connection Cable: RJ12/6\_5, 5m (Included) max. 50m  
 Mounting: DinRail or lateral mounting clips  
 Dimensions: 70 x 80 x 80 mm (W x L x H),  
 Hall sensor diameter hole : 9,25mm



### AC Current Sensor

SM\_II\_CS100A

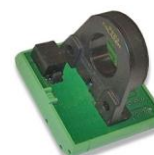
Measurement Range: 0 – 100A (AC, True RMS)  
 Power Supply Voltage: 12 - 15V DC  
 Output Signal: 0 - 10V DC  
 Special Features: connection for other sensors  
 Connection Cable: RJ12/6\_5, 5m (Included) max. 50m  
 Mounting: DinRail or lateral mounting clips  
 Dimensions: 70 x 80 x 80 mm (W x L x H),  
 Hall sensor diameter hole : 9,25mm



### AC Current Sensor

SM\_II\_CS130A

Measurement Range: 0 – 130A (AC, True RMS)  
 Power Supply Voltage: 12 - 15V DC  
 Output Signal: 0 - 10V DC  
 Special Features: connection for other sensors  
 Connection Cable: RJ12/6\_5, 5m (Included) max. 50m  
 Mounting: DinRail or lateral mounting clips  
 Dimensions: 70 x 80 x 80 mm (W x L x H),  
 Hall sensor diameter hole : 9,25mm



# Sensors for SITEMONITOR II – Technical Data

## Water and High Humidity Sensor

SM\_64\_II\_HYGRO

Measurement Range: 94% rel. Humidity  
 Power Supply: 230V / AC +/- 10% / 3VA  
 Current Consumption: ca. 15 mA  
 Contact Load: 250 V/AC/6A  
 Type of Contact: NC  
 Special Features: 1 Sensor (Included in delivery) included Alarmbuzzer  
 Up to 3 sensors may be connected  
 Connection Cable: RJ12/6\_5, 5m, (Included) max. 50m  
 Dimensions: 112 x 94 x 52 mm (W x L x H)



## Sensor for SM\_64\_II\_Hygro

SM\_64\_II\_HYG\_S

Dimension: Sensor with 2m cable



## Glas Break Sensor Digital

SM64\_II\_GLAS

Measurement Range: Radius ca. 2m  
 Type of Contact: NC  
 Frequency Domain: 120 kHz  
 Connection Cable: RJ12/6\_5, 5m, (Included) max. 50m  
 Dimensions: 27 x 27 x 14 mm (W x L x H)



## Motion Detector

SM64\_II\_MD

Measurement Range: 14m x 14m, 90°  
 Power Supply Voltage: 9 – 16 V DC  
 Output Signal: Same as power supply  
 Current Consumption: ca. 17 mA  
 Connection Cable: RJ12/6\_5, 5m, (Included) max. 50m  
 Dimensions: 115 x 60 x 45 mm (W x L x H)



## Smoke Detector

SM64\_II\_SD

Power Supply Voltage: 10 – 15V DC  
 Output Signal: Same as power supply  
 Current Consumption: ca. 50mA  
 Detection: Photoelectric chamber  
 Connection Cable: RJ12/6\_5, 5m, (Included) max. 50m  
 Dimensions: 84 x 77 mm (D x H)



## Door Contact

SM\_64\_II\_DC

Type of Contact: Magnetic Alarm Contact  
 Connection Cable: RJ12/6\_5, 5m, (Included) max. 50m

