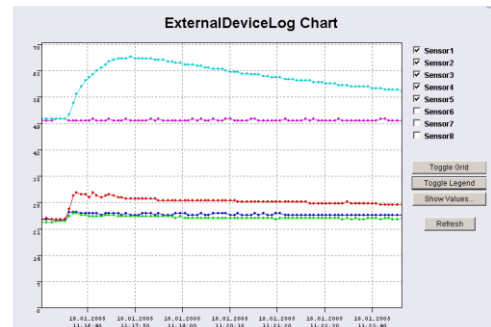


## SM\_T\_COM

Solutions for Intelligent  
Network Resource Management

Temperature Sensor for COM2 on the  
CS121L / SC / Mini / R\_II SNMP adapter.



SM\_T\_COM - Optional Temperature Sensor for direct connection to COM 2 port of a CS121

## Description

The SM\_T\_COM is a temperature sensor for use with the GENEREX CS121 standard models. It has a range from -25° - 100° Celsius (-13° - 212° Fahrenheit) and comes with a 1.8 meter cable for connecting to the CS121 COM2 port. Used together with the CS121, the SM\_T\_COM is designed for monitoring and managing 19"- racks, UPS rooms, server and data center rooms and for industrial applications. Simple Plug 'n Play connections insure that the sensor can be easily and safely installed.

UPS Status: ● UPS STATUS OK  
 AUX Status: ● ● ● ●      Sensor Status: ● ● ●

### SM\_T\_COM Status

SM_T_COM Status				
Location	Value	Unit	Threshold (Low)	Threshold (High)
Temp. Sensor 1	22.0	Degree Celsius	0.0	100.0

Simply plug the SM\_T\_COM into the COM2 port of the CS121 and select the SM\_T\_COM option in the dropdown menu in the web server configuration page for COM2. Then the temperature alarm levels and corresponding actions (like Email, log file entries, UPS shutdown, remote program actions via RCCMD, Network computer shutdowns, etc.) can be individually configured in the web page EVENTS/ALARMS. In addition, the data is available via SNMP format (CS121RFC1628.MIB) and via MODBUS over IP. Measured values and alarms are also visualized in the web interface.

UPS Status: ● UPS STATUS OK  
 AUX Status: ● ● ● ●      Sensor Status: ● ● ●

### COM2 Settings

COM2 Mode: SM\_T\_COM  
 COM2 Baud Rate: 38400  
 COM2 Parity: None

Please note: COM2 is always used for configuration as long as DIP switch 1 is off!

Apply

---

### SM\_T\_COM Settings

Location	Unit	Threshold (Low)	Threshold (High)	Offset
<input style="width: 150px;" type="text" value="Temp. Sensor 1"/>	<input style="width: 100px;" type="text" value="Degree Celsius"/>	<input style="width: 50px;" type="text" value="0.0"/>	<input style="width: 50px;" type="text" value="100.0"/>	<input style="width: 50px;" type="text" value="0.0"/>

Apply

In situations where more than 1 temperature sensor or when other types of sensors are also needed, then the GENEREX SENSORMANAGER is able to provide up to 8 temperature measurements or other analogue measurement values, plus 8 digital alarms (4 in / 4 Out).

## Technical Data

- 1 \* Rs-232 interface, baud rate 2400, n,8,1
- 1 \* Temperature analog value (updated every 5 seconds) from -25°C- 100°C (-13° - 212° Fahrenheit)
- Cable length (standard) 1.8m, max. cable length 30m, IP 20