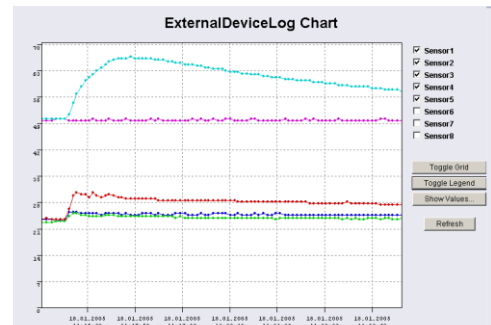


# SM\_T\_H\_COM

Solutions for Intelligent  
Network Resource Management

Temperature and Humidity Sensor for COM2  
on the CS121L / SC / Mini / R\_II SNMP adapter.



SM\_T\_H\_COM - Optional Temperature and Humidity Sensor for direct connection to COM 2 port of a CS121

## Description

The SM\_T\_H\_COM is a temperature and humidity sensor for use with the GENEREX CS121 standard models. It has a range from -25° - 100° Celsius (-13° – 212° Fahrenheit) and 0-100% relative Humidity and comes with a 1.8 meter cable for connecting to the CS121 COM2 port. Used together with the CS121, the SM\_T\_H\_COM is designed for monitoring and managing 19"-racks, UPS rooms, server and data center rooms and for industrial applications. Simple Plug 'n Play connections insure that the sensor can be easily and safely installed.

UPS Status: ● UPS STATUS OK

AUX Status: ● ● ● ●

Sensor Status: ● ● ●

### SM\_T\_H\_COM Status

SM\_T\_H\_COM Status ?

Location	Value	Unit	Threshold (Low)	Threshold (High)
Temp. Sensor 1	20.5	Degree Celsius	0.0	100.0
Humidity Sensor 1	22.0	% rel.H	10.0	100.0

Simply plug the SM\_T\_H\_COM into the COM2 port of the CS121 and select the SM\_T\_H\_COM option in the dropdown menu in the web server configuration page for COM2. Then the temperature and humidity alarm levels and corresponding actions (like Email, log file entries, UPS shutdown, remote program actions via RCCMD, Network computer shutdowns, etc.) can be individually configured in the web page EVENTS/ALARMS. In addition, the data is available via SNMP format (CS121RFC1628.MIB) and via MODBUS over IP. Measured values and alarms are also visualized in the web interface.

UPS Status: ● UPS STATUS OK

AUX Status: ● ● ● ●

Sensor Status: ● ● ●

COM2 Settings ?

COM2 Mode:

COM2 Baud Rate:

COM2 Parity:

Please note: COM2 is always used for configuration as long as DIP switch 1 is off!

Apply

In situations where more than 1 temperature and humidity sensor or when other types of sensors are also needed, then the GENEREX SENSORMANAGER is able to provide up to 8 temperature measurements or other analogue measurement values, plus 8 digital alarms (4 in / 4 Out). Please note to execute the CS121 function "Save, Exit & Reboot" after configuration.

## Technical Data

- 1 \* Rs-232 interface, baud rate 2400, n,8,1
- 1 \* Temperature analog value (updated every 5 seconds) from -25°C- 100°C (-13° – 212° Fahrenheit)
- Cable length (standard) 1.8m, max. cable length 30m, IP 20

**Attention!** : please use FW: 3.79 or higher to use SM\_T\_H\_COM.